

# FUND FACT SHEET

All data as of March 31, 2023 unless otherwise stated

## Fund Objective and Strategy

The Fund aims to achieve a steady stream of income by investing in a diversified portfolio of Philippine Peso denominated high-grade fixed income instruments, such as, but not limited to, government securities, corporate notes and bonds, and fixed income funds. The Fund aims to outperform its composite benchmark, 75% of the 91-day Philippine Treasury Bill– net of tax and 25% of the BPI 1-5 Year Index.

## Fund Details

Fund Manager	BPI Investment Management Inc.
Inception Date	October 25, 2011
Fund Classification	Bond Fund
Fund Size	PHP 9,662.35 Million
Fund Currency	Philippine Peso
No. of Holdings	90
Fund Management Fee	1.00% per annum

## Highest and Lowest Unit Price Achieved

Initial (25 October 2011)	1.0000
Highest (30 March 2023)	1.3861
Lowest (25 October 2011)	1.0000
NAVPU – 31 March 2023	1.3858

## Risk Classification

The Fund is suitable for investors who take medium- to long-term views. Prior to investment in the Fund, the investor shall undergo a client suitability assessment procedure to determine whether the Fund is appropriate for him considering his investment objective, risk tolerance, preferences and experience. The Fund's yield, net asset value, and total return may fluctuate as a result of interest rate movements and the changes in credit quality of the investments. On redemption of shares, an investor may receive an amount less than the original amount of the investment. Liquidity risk also needs to be taken into account.

## BPI-Philam Peso Bond Fund Market Commentary

The BPI Government Bond Index returned 0.59% in March as the benchmark government yield curve flattened with the short-end of the curve rising and the long-end falling. Average daily trading volume rose to PHP14.83 billion from February's PHP11.91 billion with trades mostly seen on the long-end of the curve.

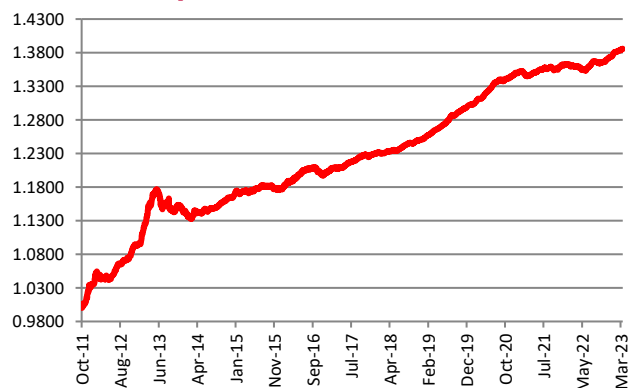
The Bureau of the Treasury (BTr) recently decreased each auction's offer size to PHP25 billion for the five FXTN issuances in March. The 6-year FXTN 7-67, 10-year FXTN 10-69, 13-year FXTN 25-7, 20-year FXTN 20-25, and 7-year FXTN 7-68 were all fully awarded at average yields of 6.172%, 6.378%, 6.167%, 6.631%, and 6.162%, respectively. Towards the end of the month, the BTr released the April auction schedule with four Treasury Bill auctions and four FXTN issuances (3-, 9-, 13-, and 7-year tenors) each with an offer size of PHP25 billion.

In the local space, February inflation printed lower than market expectations at 8.6% year-on-year. The decline in the February figure can be attributed to slower transport costs and flat utility inflation. Despite easing headline inflation, food inflation accelerated further as supply-side constraints continue. Consequently, the Bangko Sentral ng Pilipinas (BSP) hiked its policy rate by 25 basis points to 6.25% during the March Monetary Board meeting, reiterating its commitment to fighting elevated inflation. Furthermore, the central bank trimmed its 2023 inflation forecast to 6.0% from 6.1%.

## Cumulative Performance (%)

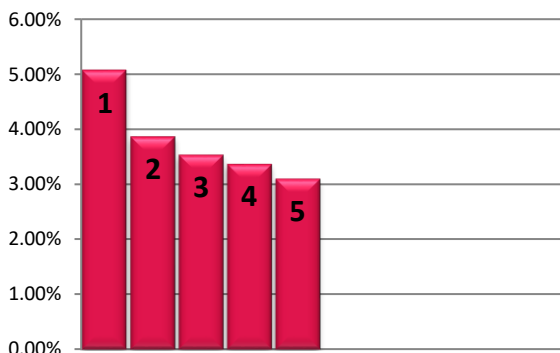
YTD	6 Months	1YR	2YR	Since Inception
0.85	1.52	1.89	2.99	38.58

## NAVPU Graph



PORTFOLIO COMPOSITION	
Allocation	% of Fund
Government	33.99
Corporates	52.97
Fixed Income Funds	0.00
Cash & Cash Equivalents	10.69
Preferreds	2.35

## TOP HOLDINGS Asset Allocation



① Retail Treasury Bond 2027	5.08%
② Fixed Rate Treasury Bond 2032	3.87%
③ Fixed Rate Treasury Bond 2028	3.54%
④ Ayala Corporation Bond 2025	3.37%
⑤ Aboitiz Equity Ventures Bond 2027	3.10%

**Risk Warning:** Past performance is not indicative of future results. Our investment management services relate to a variety of investments, each of which can fluctuate in value. The value of portfolios we manage may fall as well as rise, and the investor may not get back the full amount originally invested. The investment risks vary between different types of instruments. For example, for investments involving exposure to a currency other than that in which the portfolio is denominated, changes in the rate of exchange may cause the value of investments, and consequently the value of the portfolio, to go up or down. In the case of a higher volatility portfolio the loss on realization or cancellation may be very high (including total loss of investment), as the value of such an investment may fall suddenly and substantially. In making an investment decision, prospective investors must rely on their own examination of the merits and risks involved. **Disclaimer:** Unless otherwise noted, all information contained herein is sourced from BPI AIA\* internal data. The content included herein has been shared with various in-house departments within BPI AIA\*, in the ordinary course of completion. BPI AIA\* complies with the confidentiality requirements of their respective jurisdictions. Parts of this presentation may be based on information received from sources we consider reliable. We do not represent that all of this information is accurate or complete, however, and it may not be relied upon as such.