

# FUND FACT SHEET

All data as of July 31, 2024 unless otherwise stated

## Fund Objective and Strategy

The Fund aims to achieve a steady stream of income by investing in a diversified portfolio of Philippine Peso denominated high-grade fixed income instruments, such as, but not limited to, government securities, corporate notes and bonds, and fixed income funds. The Fund aims to outperform its composite benchmark, 75% of the 91-day Philippine Treasury Bill– net of tax and 25% of the BPI 1-5 Year Index.

## Fund Details

Fund Manager	BPI WEALTH – A Trust Corporation
Inception Date	October 25, 2011
Fund Classification	Bond Fund
Fund Size	PHP 10,215.76 Million
Fund Currency	Philippine Peso
No. of Holdings	89
Fund Management Fee	1.00% per annum

## Highest and Lowest Unit Price Achieved

Initial (25 October 2011)	1.0000
Highest (31 July 2024)	1.4493
Lowest (25 October 2011)	1.0000
NAVPU – 31 July 2024	1.4493

## Risk Classification

The Fund is suitable for investors who take medium- to long-term views. Prior to investment in the Fund, the investor shall undergo a client suitability assessment procedure to determine whether the Fund is appropriate for him considering his investment objective, risk tolerance, preferences and experience. The Fund's yield, net asset value, and total return may fluctuate as a result of interest rate movements and the changes in credit quality of the investments. On redemption of shares, an investor may receive an amount less than the original amount of the investment. Liquidity risk also needs to be taken into account.

## BPI-Philam Peso Bond Fund

### Market Commentary

The BPI Government Bond Index rose 1.96% in July as Philippine government bond yields fell by 30 basis points (bps) on average. Average daily trading volume for the month amounted to Php34.5 billion, higher than June's Php20.8 billion with trades mostly seen in 5- to 10-year securities. The Bureau of the Treasury (BTR) held five FXTN auctions in July which were all fully awarded.

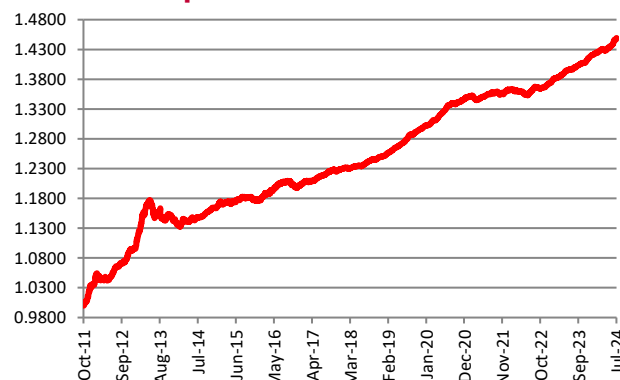
In the local space, June headline inflation decelerated from 3.9% in May to 3.7% in June. The latest figure was also below economists' median estimate of 3.9%. The better-than-expected inflation was mainly driven by steep declines in power rates and slower increases in oil prices. In line with this, Bangko Sentral ng Pilipinas (BSP) Governor Eli Remolona issued statements supporting policy rate cuts soon, potentially as early as in August.

In the global space, US inflation decelerated from 3.3% in May to 3.0% in June, also below the 3.1% expectations. US Federal Reserve officials highlighted the progress in moderating inflation and slowing economic data which support eventual policy rate cuts.

### Cumulative Performance (%)

YTD	6 Months	1YR	2YR	Since Inception
2.02	1.76	3.51	6.36	44.93

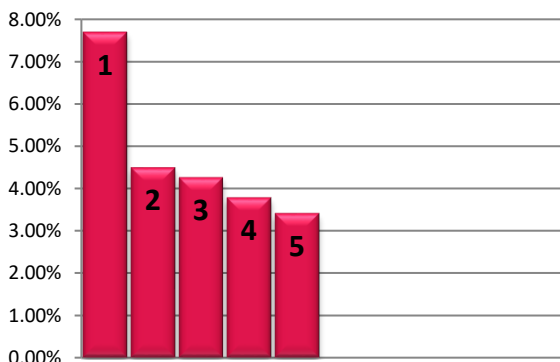
### NAVPU Graph



PORTFOLIO COMPOSITION	
Allocation	% of Fund
Government	44.92
Corporates	53.15
Fixed Income Funds	0.00
Cash & Cash Equivalents	1.19
Preferreds	0.74

## TOP HOLDINGS

### Asset Allocation



- ① Retail Treasury Bond 2029 7.69%
- ② Fixed Rate Treasury Bond 2044 4.49%
- ③ Fixed Rate Treasury Bond 2032 4.26%
- ④ Ayala Corporation Bond 2025 3.78%
- ⑤ Aboitiz Equity Ventures, Inc. Bond 2027 3.41%

**Risk Warning:** Past performance is not indicative of future results. Our investment management services relate to a variety of investments, each of which can fluctuate in value. The value of portfolios we manage may fall as well as rise, and the investor may not get back the full amount originally invested. The investment risks vary between different types of instruments. For example, for investments involving exposure to a currency other than that in which the portfolio is denominated, changes in the rate of exchange may cause the value of investments, and consequently the value of the portfolio, to go up or down. In the case of a higher volatility portfolio the loss on realization or cancellation may be very high (including total loss of investment), as the value of such an investment may fall suddenly and substantially. In making an investment decision, prospective investors must rely on their own examination of the merits and risks involved. **Disclaimer:** Unless otherwise noted, all information contained herein is sourced from BPI AIA\* internal data. The content included herein has been shared with various in-house departments within BPI AIA\*, in the ordinary course of completion. BPI AIA\* complies with the confidentiality requirements of their respective jurisdictions. Parts of this presentation may be based on information received from sources we consider reliable. We do not represent that all of this information is accurate or complete, however, and it may not be relied upon as such.