



FUND FACT SHEET

All data as of June 30, 2023 unless otherwise stated

Fund Objective and Strategy

The Fund aims to achieve long-term capital appreciation by investing in a diversified portfolio of equities and fixed income instruments. The Fund shall invest at least 90% of its net assets in equity securities under normal market conditions. The Fund aims to outperform its composite benchmark, 90% BPI Philippine Equity Total Return Index plus 10% return of the 91-day Philippine Treasury Bill (net of tax).

Fund Details

Fund Manager	BPI WEALTH – A Trust Corporation
Inception Date	October 25, 2011
Fund Classification	Equity Fund
Fund Size	PHP 2,614.92 Million
Fund Currency	Philippine Peso
No. of Holdings	30
Fund Management Fee	2.00% per annum

Highest and Lowest Unit Price Achieved

Initial (25 October 2011)	1.0000
Highest (30 January 2018)	1.6863
Lowest (17 March 2020)	0.8894
NAVPU – 30 June 2023	1.1423

Risk Classification

The Fund is suitable for investors who take medium- to long-term views. Prior to investment in the Fund, the investor shall undergo a client suitability assessment procedure to determine whether the Fund is appropriate for him considering his investment objective, risk tolerance, preferences and experience. As a marked-to-market Mutual Fund, the Fund's net asset value, and total return may fluctuate as a result of movements in stock prices and interest rates. On redemption of shares, an investor may receive an amount less than the original amount of investment. Liquidity risk also needs to be taken into account.

BPI-Philam Growth Fund

Market Commentary

The Philippine Stock Exchange Index (PSEi) finished below the 6,500 level again on muted volumes as worries over the elevated interest rate environment persisted. The US Federal Reserve (The Fed) kept benchmark rates steady in the latest FOMC meeting but still gave a hawkish stance by hinting of potentially two more rate hikes this year. Meanwhile on the local front, the Bangko Sentral ng Pilipinas (BSP) also maintained interest rates with retiring BSP Governor Medalla stating that the central bank will only cut rates should inflation fall within the BSP target band of 2% to 4%. The PSEi dropped 0.14% to 6,468.17 in June.

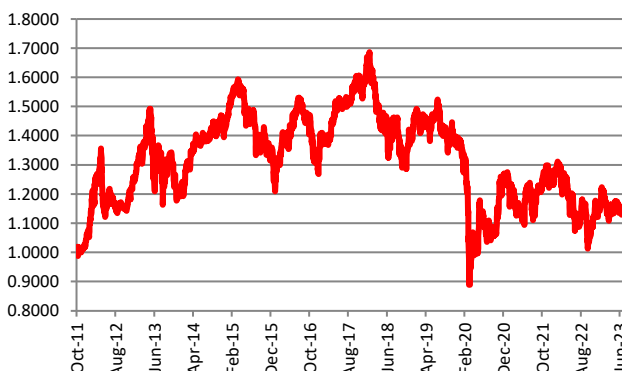
We saw lackluster trading for the month of June with Average Daily Turnover only at Php4.27 billion or 15% lower month-on-month. Meanwhile, foreigners turned "Net Buyers" at US\$97 million, mostly flowing through banks, particularly BPI and BDO. However, foreign participation fell to 38% compared to 53% in the previous period.

As for individual stock performances, the top three index gainers for the month were: MPI (+9.66%), PLDT (+9.33%) and BPI (+8.85%). Meanwhile, the bottom three index performers included: WLCON (-14.96%), ACEN (-8.02%) and ALI (-7.60%).

Cumulative Performance (%)

YTD	6 Months	1YR	2YR	Since Inception
-0.15	-0.15	5.16	-6.05	14.23

NAVPU Graph

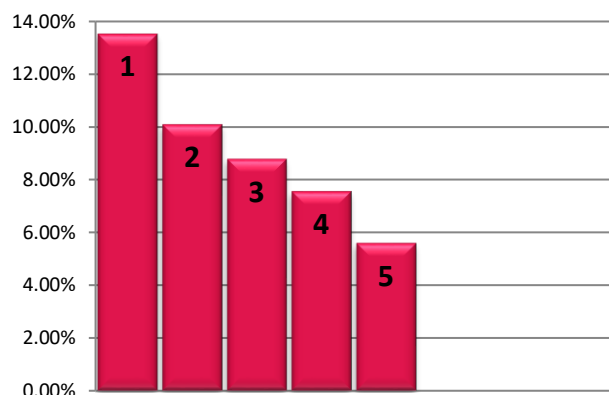


PORTFOLIO COMPOSITION

Allocation	% of Fund
Equities	90.16
Fixed Income	4.68
Cash & Cash Equivalents	5.16
Money Market Funds	0.00

TOP HOLDINGS

Asset Allocation



① SM Investments Corporation	13.53%
② SM Prime Holdings, Inc.	10.09%
③ BDO Unibank, Inc.	8.78%
④ Bank of the Philippine Islands	7.56%
⑤ Ayala Land, Inc.	5.59%

Risk Warning: Past performance is not indicative of future results. Our investment management services relate to a variety of investments, each of which can fluctuate in value. The value of portfolios we manage may fall as well as rise, and the investor may not get back the full amount originally invested. The investment risks vary between different types of instruments. For example, for investments involving exposure to a currency other than that in which the portfolio is denominated, changes in the rate of exchange may cause the value of investments, and consequently the value of the portfolio, to go up or down. In the case of a higher volatility portfolio the loss on realization or cancellation may be very high (including total loss of investment), as the value of such an investment may fall suddenly and substantially. In making an investment decision, prospective investors must rely on their own examination of the merits and risks involved. **Disclaimer:** Unless otherwise noted, all information contained herein is sourced from BPI AIA* internal data. The content included herein has been shared with various in-house departments within BPI AIA*, in the ordinary course of completion. BPI AIA* complies with the confidentiality requirements of their respective jurisdictions. Parts of this presentation may be based on information received from sources we consider reliable. We do not represent that all of this information is accurate or complete, however, and it may not be relied upon as such.