



FUND FACT SHEET

All data as of June 28, 2024 unless otherwise stated

Fund Objective and Strategy

The Fund aims to achieve long-term capital appreciation by investing in a diversified portfolio of equities and fixed income instruments. The Fund shall invest at least 90% of its net assets in equity securities under normal market conditions. The Fund aims to outperform its composite benchmark, 90% BPI Philippine Equity Total Return Index plus 10% return of the 91-day Philippine Treasury Bill (net of tax).

Fund Details

Fund Manager	BPI WEALTH – A Trust Corporation
Inception Date	October 25, 2011
Fund Classification	Equity Fund
Fund Size	PHP 2,424.30 Million
Fund Currency	Philippine Peso
No. of Holdings	31
Fund Management Fee	2.00% per annum

Highest and Lowest Unit Price Achieved

Initial (25 October 2011)	1.0000
Highest (30 January 2018)	1.6863
Lowest (17 March 2020)	0.8894
NAVPU – 28 June 2024	1.1720

Risk Classification

The Fund is suitable for investors who take medium- to long-term views. Prior to investment in the Fund, the investor shall undergo a client suitability assessment procedure to determine whether the Fund is appropriate for him considering his investment objective, risk tolerance, preferences and experience. As a marked-to-market Mutual Fund, the Fund's net asset value, and total return may fluctuate as a result of movements in stock prices and interest rates. On redemption of shares, an investor may receive an amount less than the original amount of investment. Liquidity risk also needs to be taken into account.

BPI-Philam Growth Fund

Market Commentary

The Philippine Stock Exchange Index (PSEi) went narrowly down for the month of June. Market sentiment was weak due to the depreciation of the Philippine Peso when it hovered near the Php59 level. In addition, the FTSE rebalancing related activity further pulled the local bourse to the year-low of 6,158.58. However, the market bounced towards the latter part of the month on bargain hunting as investors digested BSP Governor's dovish rhetoric and lower inflation outlook. The PSEi closed at 6,411.91 or 0.3% lower month-on-month in June.

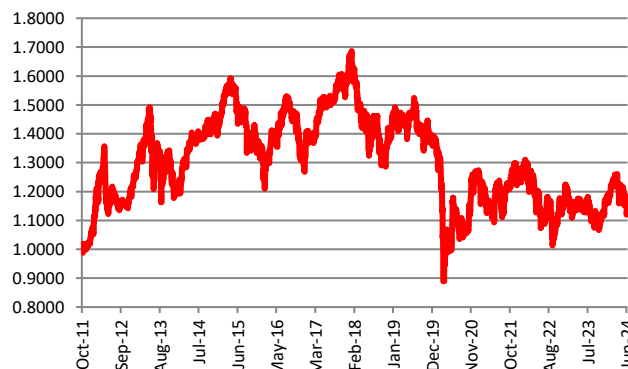
Trading activity was subdued for the month. Average Daily Turnover only recorded at Php4.4 billion. Meanwhile, foreign activity continued to register net outflows at US\$104 million for June. Index proxies SM and AC both recorded the biggest outflow as market sentiment remained weak. Foreign participation improved from 46% to 48% for the month

On a per name basis, the top three index gainers for the month were: AEV(+10.70%), MBT (+8.86%) and ALI (+8.57%). Meanwhile, the bottom three performers include: MONDE (-16.07%), JGS (-15.97%) and CNPF (-14.27%).

Cumulative Performance (%)

YTD	6 Months	1YR	2YR	Since Inception
1.37	1.37	2.60	7.90	17.20

NAVPU Graph

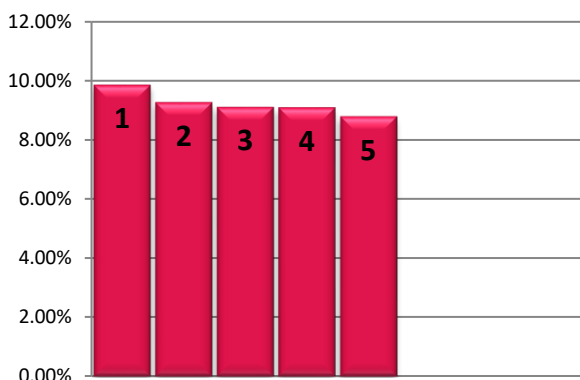


PORTFOLIO COMPOSITION

Allocation	% of Fund
Equities	95.95
Fixed Income	2.71
Cash & Cash Equivalents	1.34
Money Market Funds	0.00

TOP HOLDINGS

Asset Allocation



① Int'l. Container Terminal Services, Inc.	9.84%
② Bank of the Philippine Islands	9.25%
③ SM Investments Corporation	9.09%
④ SM Prime Holdings, Inc.	9.08%
⑤ BDO Unibank, Inc.	8.78%

Risk Warning: Past performance is not indicative of future results. Our investment management services relate to a variety of investments, each of which can fluctuate in value. The value of portfolios we manage may fall as well as rise, and the investor may not get back the full amount originally invested. The investment risks vary between different types of instruments. For example, for investments involving exposure to a currency other than that in which the portfolio is denominated, changes in the rate of exchange may cause the value of investments, and consequently the value of the portfolio, to go up or down. In the case of a higher volatility portfolio the loss on realization or cancellation may be very high (including total loss of investment), as the value of such an investment may fall suddenly and substantially. In making an investment decision, prospective investors must rely on their own examination of the merits and risks involved. **Disclaimer:** Unless otherwise noted, all information contained herein is sourced from BPI AIA* internal data. The content included herein has been shared with various in-house departments within BPI AIA*, in the ordinary course of completion. BPI AIA* complies with the confidentiality requirements of their respective jurisdictions. Parts of this presentation may be based on information received from sources we consider reliable. We do not represent that all of this information is accurate or complete, however, and it may not be relied upon as such.