

FUND FACT SHEET

All data as of May 31, 2023 unless otherwise stated

Fund Objective and Strategy

The Fund, operating as a Fund-of-Funds, intends to achieve for its Participants long-term capital growth by investing in a diversified portfolio of global equity collective investment schemes. The Fund aims to provide excess return over the Morgan Stanley Capital International (MSCI) World Index (USD).

Fund Details

Fund Manager	BPI WEALTH – A Trust Corporation
Inception Date	March 12, 2015
Fund Classification	Global Equity Fund-of-Funds
Fund Size	USD 111.01 Million
Fund Currency	United States Dollar
No. of Holdings	12
Fund Management Fee	1.50% per annum

Highest and Lowest Unit Price Achieved

Initial (12 March 2015)	1.0000
Highest (8 November 2021)	1.9594
Lowest (12 February 2016)	0.8692
NAVPU – 31 May 2023	1.5468

Risk Classification

The Fund is suitable for investors with an aggressive profile or for those who take long-term views. As a marked-to-market UITF, the Fund's net asset value and total return may fall as well as rise as a result of stock prices and interest rates movements. On redemption of units, an investor may receive an amount less than the original amount of investment. Prior to investment in the Fund, the investor shall undergo a client suitability assessment procedure to determine whether the Fund is appropriate for him considering his investment objective, risk tolerance, preferences and experience.

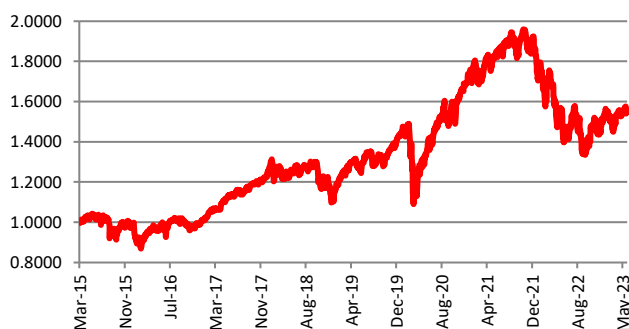
BPI-Philam Global Equity Fund Market Commentary

Global equity markets modestly declined in May. Markets remained volatile throughout the month amid the US debt ceiling talks, raising concerns of a potential default. Despite the impasse on the US debt ceiling decision, the US Federal Reserve raised its interest rates by 25 basis points, pushing its policy rate above 5% for the first time since 2007, as inflation remained persistently elevated. The US Consumer Price Index marginally declined to 4.9% year-on-year in April from 5% in March, driven by lower energy prices. Across regional markets, returns were mixed as emerging market equities underperformed the broader equity indices due to Chinese equities selling off amid weaker economic data and slower business activity. On the positive side, Japanese equities rallied during the month driven by supportive monetary policy and bullish momentum on the economy. On a sectorial perspective, technology stocks rose as investor optimism on artificial intelligence provided a boost to the sector.

Cumulative Performance (%)

YTD	6 Months	1YR	2YR	Since Inception
6.69	5.02	-0.82	-15.19	54.68

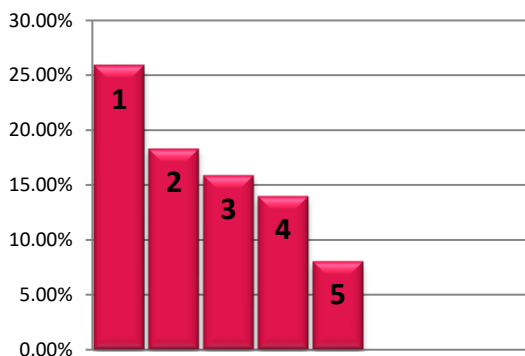
NAVPU Graph



PORTFOLIO COMPOSITION

Allocation	% of Fund
Equity Funds	98.92
Cash	0.40
Time Deposits and Money Market	0.93
Other Receivables - Net of Liabilities	-0.26

TOP HOLDINGS Asset Allocation



① Wellington Global Quality Growth Fund	25.84%
② Schroder ISF Global Sustainable Growth	18.23%
③ JPMorgan Global Select Equity Fund	15.81%
④ Capital Group New Perspective Fund	13.94%
⑤ Vanguard Dividend Appreciation ETF	8.01%

Risk Warning: Past performance is not indicative of future results. Our investment management services relate to a variety of investments, each of which can fluctuate in value. The value of portfolios we manage may fall as well as rise, and the investor may not get back the full amount originally invested. The investment risks vary between different types of instruments. For example, for investments involving exposure to a currency other than that in which the portfolio is denominated, changes in the rate of exchange may cause the value of investments, and consequently the value of the portfolio, to go up or down. In the case of a higher volatility portfolio the loss on realization or cancellation may be very high (including total loss of investment), as the value of such an investment may fall suddenly and substantially. In making an investment decision, prospective investors must rely on their own examination of the merits and risks involved. **Disclaimer:** Unless otherwise noted, all information contained herein is sourced from BPI AIA* internal data. The content included herein has been shared with various in-house departments within BPI AIA*, in the ordinary course of completion. BPI AIA* complies with the confidentiality requirements of their respective jurisdictions. Parts of this presentation may be based on information received from sources we consider reliable. We do not represent that all of this information is accurate or complete, however, and it may not be relied upon as such.