

# FUND FACT SHEET

All data as of May 31, 2024 unless otherwise stated

## Fund Objective and Strategy

The Fund aims to achieve long-term capital growth by investing in a diversified portfolio of equity and fixed income securities. The Fund aims to provide excess return over the composite benchmark, 50% Philippine Stock Exchange index (PSEi) and 50% return of the BPI Philippine Government Bond 1-5 Year Index, net of tax.

## Fund Details

Fund Manager	BPI WEALTH – A Trust Corporation
Inception Date	March 12, 2015
Fund Classification	Balanced Fund
Fund Size	PHP3,036.02 Million
Fund Currency	Philippine Peso
No. of Holdings	
Fund Management Fee	1.50% per annum

## Highest and Lowest Unit Price Achieved

Initial (12 March 2015)	1.0000
Highest (30 January 2018)	1.0793
Lowest (17 March 2020)	0.8382
NAVPU – 31 May 2024	0.9580

## Risk Classification

The Fund is suitable for investors with an aggressive profile or for those who take long-term views. As a marked-to-market UITF, the Fund's net asset value and total return may fall as well as rise as a result of stock prices and interest rates movements. On redemption of units, an investor may receive an amount less than the original amount of investment. Prior to investment in the Fund, the investor shall undergo a client suitability assessment procedure to determine whether the Fund is appropriate for him considering his investment objective, risk tolerance, preferences and experience.

## BPI-Philam Balanced Fund Market Commentary

The BPI Government Bond Index rose 1.49% in May as the local yield curve fell by 22.28 basis points (bps) on average. Average daily trading volume for the month amounted to Php23.86 billion, higher than April's Php14.73 billion with trades mostly seen on the short-end of the curve.

The Bureau of the Treasury (BTr) held four FXTN auctions in May. The 10-year FXTN 10-72 and 25-year FXTN 20-23 were fully awarded at average yields of 6.825% and 6.950%, respectively. Meanwhile, the new 20-year issuance, FXTN 20-27, was only partially awarded and priced at a coupon of 6.875%. The final bond auction for the month was FXTN 3-30, fully awarded at an average rate of 6.347%. Demand was generally healthy for the bonds issued throughout the month.

In the local space, April headline inflation rose by 3.8% year-on-year from the previous month's 3.7%. Food, transport, and restaurants were the main driver of inflation, though the increase in rice prices slowed for the first time in six months. Nonetheless, the inflation print remained within the central bank's 2 to 4% target range. The country's economy grew by 5.7% year-on-year for the first quarter of 2024, lower than consensus estimate of 5.9%. While net exports contributed positively for the period, other sectors such as private consumption and government spending appeared to be slowing. The first quarter GDP growth figure falls short of the government's official target of 6-7% for the year.

The Philippine Stock Exchange sharply dropped for the month on large foreign selling. Market sentiment went down largely due to the depreciation of the local currency when it traded north of Php58 against the dollar. This was mostly driven by a strong dollar after the US Federal Reserve (The Fed), according to the FOMC minutes of the meeting, said they may consider pushing back the rate cut amid growing inflation concerns. Moreover, MSCI rebalancing further added to the volatility of the market where the Philippines was estimated to have a US\$100-120-million worth of outflow. The PSEi closed the month of May at 6,433.10 or 3.99% lower on a month-on-month basis.

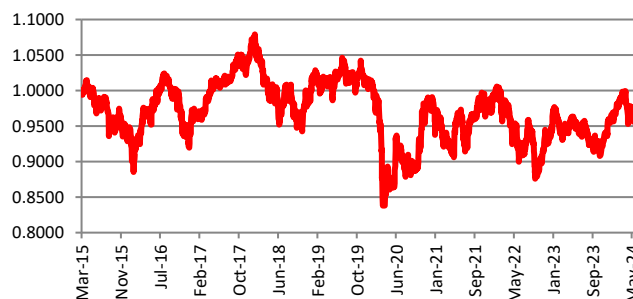
Trading activity improved mostly due to the MSCI rebalancing. Average Daily Turnover registered at Php7.6 billion. Meanwhile, foreigners continued to be big sellers at US\$174 million recorded in May. MSCI related name – AEV, was the top sold name after its deletion in the Standard Index. Property names were also sold heavily, while telecommunications were top foreigner bought names. Consumer names, on the other hand, were mixed. Foreign participation declined to 46%.

On a per name basis, the top three index gainers for the month include: WLCON (+19.76%), ACEN (+15.66%) and CNVRG (+14.47%). Meanwhile, the bottom three performers were: AEV (-16.55%), BDO (-12.28%) and MBT (-11.36%).

## Cumulative Performance (%)

YTD	6 Months	1YR	2YR	Since Inception
0.40	2.39	0.88	0.66	-4.20

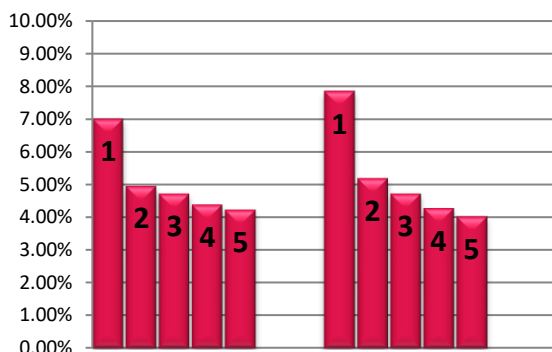
## NAVPU Graph



## PORTFOLIO COMPOSITION

Allocation	% of Fund
Equities	49.03
Cash	0.23
Corporates	7.75
Time Deposits and Money Market	1.77
Government	40.92
Other Receivables - Net of Liabilities	0.30

## TOP HOLDINGS Asset Allocation



### Top Equity Holdings

① SM Investments Corporation	7.01%
② Int'l. Container Terminal Services, Inc.	4.96%
③ Bank of the Philippine Islands	4.72%
④ BDO Unibank, Inc.	4.39%
⑤ SM Prime Holdings, Inc.	4.23%

### Top Fixed Income Holdings

① Retail Treasury Bond 3/7/2028	7.86%
② Fixed Rate Treasury Note 2/14/2026	5.19%
③ Retail Treasury Bond 2/28/2029	4.72%
④ Fixed Rate Treasury Note 10/13/2029	4.28%
⑤ Retail Treasury Bond 8/22/2028	4.03%

**Risk Warning:** Past performance is not indicative of future results. Our investment management services relate to a variety of investments, each of which can fluctuate in value. The value of portfolios we manage may fall as well as rise, and the investor may not get back the full amount originally invested. The investment risks vary between different types of instruments. For example, for investments involving exposure to a currency other than that in which the portfolio is denominated, changes in the rate of exchange may cause the value of investments, and consequently the value of the portfolio, to go up or down. In the case of a higher volatility portfolio the loss on realization or cancellation may be very high (including total loss of investment), as the value of such an investment may fall suddenly and substantially. In making an investment decision, prospective investors must rely on their own examination of the merits and risks involved. **Disclaimer:** Unless otherwise noted, all information contained herein is sourced from BPI AIA\* internal data. The content included herein has been shared with various in-house departments within BPI AIA\*, in the ordinary course of completion. BPI AIA\* complies with the confidentiality requirements of their respective jurisdictions. Parts of this presentation may be based on information received from sources we consider reliable. We do not represent that all of this information is accurate or complete, however, and it may not be relied upon as such.