

FUND FACT SHEET

All data as of March 27, 2024 unless otherwise stated

Fund Objective and Strategy

The Fund aims to achieve long-term capital growth by investing in a diversified portfolio of equity and fixed income securities. The Fund aims to provide excess return over the composite benchmark, 50% Philippine Stock Exchange index (PSEi) and 50% return of the BPI Philippine Government Bond 1-5 Year Index, net of tax.

Fund Details

Fund Manager	BPI WEALTH – A Trust Corporation
Inception Date	March 12, 2015
Fund Classification	Balanced Fund
Fund Size	PHP3,157.67 Million
Fund Currency	Philippine Peso
No. of Holdings	58
Fund Management Fee	1.50% per annum

Highest and Lowest Unit Price Achieved

Initial (12 March 2015)	1.0000
Highest (30 January 2018)	1.0793
Lowest (17 March 2020)	0.8382
NAVPU – 27 March 2024	0.9929

Risk Classification

The Fund is suitable for investors with an aggressive profile or for those who take long-term views. As a marked-to-market UITF, the Fund's net asset value and total return may fall as well as rise as a result of stock prices and interest rates movements. On redemption of units, an investor may receive an amount less than the original amount of investment. Prior to investment in the Fund, the investor shall undergo a client suitability assessment procedure to determine whether the Fund is appropriate for him considering his investment objective, risk tolerance, preferences and experience.

BPI-Philam Balanced Fund Market Commentary

The BPI Government Bond Index returned 0.51% in March as the local yield curve fell 2 basis points (bps) on average. Average daily trading volume for the month amounted to Php19.73 billion, higher than February's Php16.78 billion with trades mostly seen on the belly of the curve.

The Bureau of the Treasury (BTr) held four FXTN auctions in March. The 7-year FXTN 07-71, 10-year FXTN 10-72, 20-year FXTN 20-26, and 6-year FXTN 07-70 reissues were all fully awarded at average yields of 6.270%, 6.227%, 6.189% and 6.237%, respectively. Towards the end of the month, the BTr announced the borrowing schedule for the second quarter of 2024, with weekly Treasury Bill auctions and monthly FXTN issuances (7-, 10-, 15- and 20-year tenors) and an additional 3-year issuance in May with an offer size of PHP30 billion each.

In the local space, February headline inflation rose by 3.4% year-on-year from previous month's 2.8%. The four straight months of inflation slowdown ended after rice prices rose 23.7% year-on-year due to tight supply and high world prices. BSP Governor Eli Remolona mentioned that while it's too soon to ease policy rates, it is unlikely to tighten more. The policymakers remain ready to adjust the rate settings to maintain price stability.

The Philippine Stock Exchange Index (PSEi) slightly move down by -0.59% month-on-month closing March at 6,900.53. Sentiment was dampened by inflation data showing to be sticky, resulting in a pushback in the aggressive rate cut narrative. Domestic inflation accelerated after four consecutive months of decline as the Feb '24 headline CPI came in at 3.4% (vs. consensus estimates of 3.0%). Furthermore, corporate earnings results came out underwhelming and the FSE rebalancing also prompted foreign outflows.

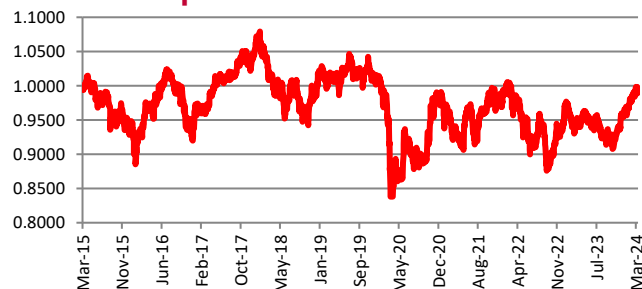
In relation, trading activity improved in March, with average daily turnover at US\$124 million or 30% higher month-on-month (MoM). Albeit foreign selling registered at US\$45 million, a reversal from last month's US\$128 million.

On a per name basis, the top three index gainers for the month were: CNPF (+19.40%), CNVRG (+10.67%) and ICT (+10.03%). On the flip side, the bottom three performers were: WLCON (-17.69%), NIKL (-11.89%) and AEV (-11.60%).

Cumulative Performance (%)

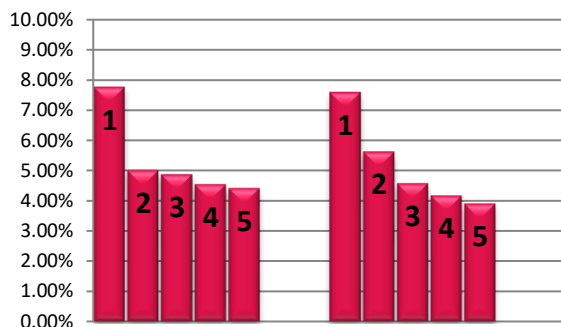
YTD	6 Months	1YR	2YR	Since Inception
4.06	6.35	5.37	0.65	-0.71

NAVPU Graph



PORTFOLIO COMPOSITION	
Allocation	% of Fund
Equities	51.39
Cash	0.30
Corporates	8.20
Time Deposits and Money Market	0.60
Government	39.43
Other Receivables - Net of Liabilities	0.07

TOP HOLDINGS Asset Allocation



Top Equity Holdings

① SM Investments Corporation	7.76%
② SM Prime Holdings, Inc.	5.00%
③ BDO Unibank, Inc.	4.87%
④ Int'l. Container Terminal Services, Inc.	4.54%
⑤ Bank of the Philippine Islands	4.41%

Top Fixed Income Holdings

① Retail Treasury Bond 3/7/2028	7.59%
② Fixed Rate Treasury Note 2/14/2026	5.62%
③ Retail Treasury Bond 2/28/2029	4.57%
④ Fixed Rate Treasury Note 10/13/2029	4.17%
⑤ Retail Treasury Bond 8/22/2028	3.90%

Risk Warning: Past performance is not indicative of future results. Our investment management services relate to a variety of investments, each of which can fluctuate in value. The value of portfolios we manage may fall as well as rise, and the investor may not get back the full amount originally invested. The investment risks vary between different types of instruments. For example, for investments involving exposure to a currency other than that in which the portfolio is denominated, changes in the rate of exchange may cause the value of investments, and consequently the value of the portfolio, to go up or down. In the case of a higher volatility portfolio the loss on realization or cancellation may be very high (including total loss of investment), as the value of such an investment may fall suddenly and substantially. In making an investment decision, prospective investors must rely on their own examination of the merits and risks involved. **Disclaimer:** Unless otherwise noted, all information contained herein is sourced from BPI AIA* internal data. The content included herein has been shared with various in-house departments within BPI AIA*, in the ordinary course of completion. BPI AIA* complies with the confidentiality requirements of their respective jurisdictions. Parts of this presentation may be based on information received from sources we consider reliable. We do not represent that all of this information is accurate or complete, however, and it may not be relied upon as such.