

# FUND FACT SHEET

All data as of April 28, 2023 unless otherwise stated

## Fund Objective and Strategy

The Fund aims to achieve long-term capital growth by investing in a diversified portfolio of equity and fixed income securities. The Fund aims to provide excess return over the composite benchmark, 50% Philippine Stock Exchange index (PSEi) and 50% return of the BPI Philippine Government Bond 1-5 Year Index, net of tax.

## Fund Details

Fund Manager	BPI Wealth
Inception Date	March 12, 2015
Fund Classification	Balanced Fund
Fund Size	PHP3,065.52 Million
Fund Currency	Philippine Peso
No. of Holdings	58
Fund Management Fee	1.50% per annum

## Highest and Lowest Unit Price Achieved

Initial (12 March 2015)	1.0000
Highest (30 January 2018)	1.0793
Lowest (17 March 2020)	0.8382
NAVPU – 28 April 2023	0.9536

## Risk Classification

The Fund is suitable for investors with an aggressive profile or for those who take long-term views. As a marked-to-market UITF, the Fund's net asset value and total return may fall as well as rise as a result of stock prices and interest rates movements. On redemption of units, an investor may receive an amount less than the original amount of investment. Prior to investment in the Fund, the investor shall undergo a client suitability assessment procedure to determine whether the Fund is appropriate for him considering his investment objective, risk tolerance, preferences and experience.

## BPI-Philam Balanced Fund Market Commentary

The BPI Government Bond Index returned 0.57% in April as the benchmark government yield curve flattened with the short-end of the curve rising and the long-end falling. Average daily trading volume rose to PHP15.42 billion from March's PHP14.83 billion with trades mostly seen on the long end of the curve.

The Bureau of the Treasury (BTr) held four FXTN auctions in April. The 3-year FXTN 7-62, 9-year FXTN 10-69, and 7-year FXTN 7-69 re-issuances were all fully awarded at average yields of 5.883%, 6.142%, and 6.012%, respectively. The first 13-year FXTN 13-1 primary issuance was partially awarded at a coupon rate of 6.250%. Towards the end of the month, the BTr released the May auction schedule with five Treasury Bill auctions and four FXTN issuances (6-, 9-, 13-, and 7-year tenors) each with an offer size of PHP25 billion. In the local space, March inflation fell to a six-month low at 7.6% year-on-year, lower than the 8.6% in February. The decline in the March figure can be attributed to slower food, transport, and utility inflation. Despite easing headline inflation, second-round effects have driven higher price pressures for restaurants and personal services, pushing the core inflation to 8.0%. BSP officials reiterated that they remained prepared to adjust policy settings as needed, adding that easing inflation would give them more flexibility moving forward.

The Philippine Stock Exchange Index (PSEi) finally broke from a two-month decline after posting a 1.9% climb for the month of April. The rally was supported by decelerated inflation prints and a strong start of the 1st quarter earnings results. Local Philippines inflation in March registered at 7.6% or slower than 8.6% mark in February. Meanwhile, the US Consumer Price Index dropped to 5% in March, lower than 5.1% consensus estimate and 6% figure in February. Adding to the positive sentiment is the strong start of the 1Q 2023 earnings reports with banking names at the forefront as BDO and BPI posted better-than-expected results. The PSEi closed at 6,625.08 in April.

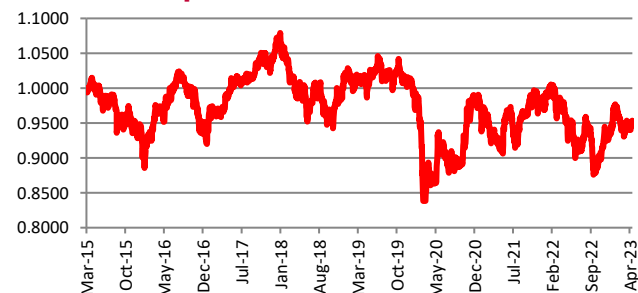
In terms of activity, the PSEi was less active in April with the Average Daily Turnover coming in only at US\$87.5 million or 33.2% lower compared from the prior month. This can be attributed to the number of non-working Holidays for the month which kept market players on the sidelines. Meanwhile, in terms of foreign flows, foreigners turned "Net Buyers", at US\$34.3 million worth of inflows. However, on a year-to-date (YTD) basis, net foreign outflows are still hefty at US\$484 million.

For the individual stock performances, the top three index gainers for the month are as follows: MPI (+20.38%), AEV (+13.12%) and BDO (+12.06%). Meanwhile, the bottom three index performers include: SCC (-16.54%), TEL (-15.21%) and DMC (-14.70%).

## Cumulative Performance (%)

YTD	6 Months	1YR	2YR	Since Inception
2.20	6.24	0.32	3.60	-4.64

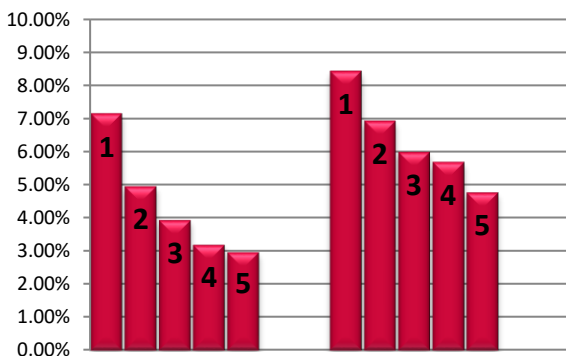
## NAVPU Graph



## PORTFOLIO COMPOSITION

Allocation	% of Fund
Equities	48.28
Cash	0.21
Corporates	8.52
Time Deposits and Money Market	1.88
Government	40.80
Other Receivables - Net of Liabilities	0.32

## TOP HOLDINGS Asset Allocation



### Top Equity Holdings

① SM Investments Corporation	7.14%
② SM Prime Holdings, Inc.	4.94%
③ BDO Unibank, Inc.	3.93%
④ Bank of the Philippine Islands	3.18%
⑤ Int'l. Container Terminal Services, Inc.	2.96%

### Top Fixed Income Holdings

① Retail Treasury Bond 3/7/2028	8.42%
② Fixed Rate Treasury Note 2/14/2026	6.92%
③ Retail Treasury Bond 8/12/2025	5.98%
④ Retail Treasury Bond 3/4/2027	5.68%
⑤ Fixed Rate Treasury Note 4/8/2026	4.76%

**Risk Warning:** Past performance is not indicative of future results. Our investment management services relate to a variety of investments, each of which can fluctuate in value. The value of portfolios we manage may fall as well as rise, and the investor may not get back the full amount originally invested. The investment risks vary between different types of instruments. For example, for investments involving exposure to a currency other than that in which the portfolio is denominated, changes in the rate of exchange may cause the value of investments, and consequently the value of the portfolio, to go up or down. In the case of a higher volatility portfolio the loss on realization or cancellation may be very high (including total loss of investment), as the value of such an investment may fall suddenly and substantially. In making an investment decision, prospective investors must rely on their own examination of the merits and risks involved. **Disclaimer:** Unless otherwise noted, all information contained herein is sourced from BPI AIA\* internal data. The content included herein has been shared with various in-house departments within BPI AIA\*, in the ordinary course of completion. BPI AIA\* complies with the confidentiality requirements of their respective jurisdictions. Parts of this presentation may be based on information received from sources we consider reliable. We do not represent that all of this information is accurate or complete, however, and it may not be relied upon as such.