

# FUND FACT SHEET

All data as of December 27, 2024 unless otherwise stated

## Fund Objective and Strategy

The Fund aims to achieve long-term capital growth by investing in a diversified portfolio of equity and fixed income securities. The Fund aims to provide excess return over the composite benchmark, 50% Philippine Stock Exchange index (PSEI) and 50% return of the BPI Philippine Government Bond 1-5 Year Index, net of tax.

## Fund Details

Fund Manager	BPI WEALTH – A Trust Corporation
Inception Date	March 12, 2015
Fund Classification	Balanced Fund
Fund Size	PHP3,108.49 Million
Fund Currency	Philippine Peso
No. of Holdings	54
Fund Management Fee	1.50% per annum

## Highest and Lowest Unit Price Achieved

Initial (12 March 2015)	1.0000
Highest (30 January 2018)	1.0793
Lowest (17 March 2020)	0.8382
NAVPU – 27 December 2024	0.9926

## Risk Classification

The Fund is suitable for investors with an aggressive profile or for those who take long-term views. As a marked-to-market UITF, the Fund's net asset value and total return may fall as well as rise as a result of stock prices and interest rates movements. On redemption of units, an investor may receive an amount less than the original amount of investment. Prior to investment in the Fund, the investor shall undergo a client suitability assessment procedure to determine whether the Fund is appropriate for him considering his investment objective, risk tolerance, preferences and experience.

## BPI-Philam Balanced Fund Market Commentary

The BPI Government Bond Index returned -0.18% in December as Philippine government bond yields rose by an average of 14 basis points (bps). Yields moved up as market participants tempered their policy rate cut expectations as US central bank officials projected fewer rate cuts in 2025. Average daily trading volume for the month fell from Php36.1 billion in November to Php32.1 billion in December, with most trades still concentrated in 5-year and 1-year securities. For the month of December, foreign investors were net sellers of Php26.1 billion, pulling the full-year 2024 total net inflow to Php56.3 billion.

The Bureau of the Treasury (BTR) held its only FXTN auction for the month on December 10, offering Php15 billion of FXTN 10-72 (9.1 years) which was fully awarded at an average yield of 5.89%.

Locally, November headline inflation rose to 2.5% year-on-year (YoY) from 2.3% YoY in October, in line with market expectations. The pick-up in inflation was driven mainly by faster food inflation due to adverse weather conditions. A series of typhoons swept through the Philippines in late-October to November, which impacted local food prices, particularly meat, fish, and vegetables.

The Philippine Stock Exchange Index (PSEI) dropped for the third straight month on another round foreign selling as investors anticipate US President-Elect Donald Trump's resumption to power. This comes with his expected tariffs which reverberated throughout the global economy and forced investors to take a risk-off stance. The PSEI fell by 1.3% month-on-month to close at 6,528.79. Despite the monthly decline, the local bourse ended up positive on a year-on-year basis at +1.22%, which bucked the trend of the 4-year decline.

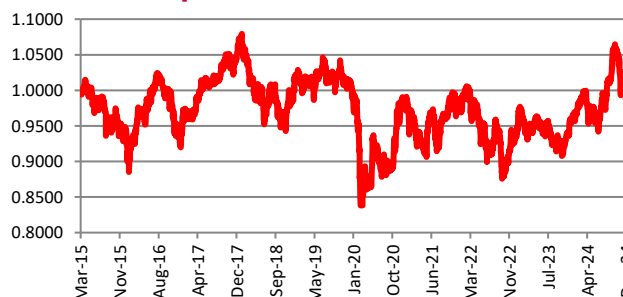
The Average Daily Turnover declined by 8.5% to Php4.83 billion on shortened trading days due to Holiday season. Meanwhile, foreign selling persisted for another month, registering at US\$104 million which has now stretched the full year 2024 net foreign outflow to US\$408 million. Their top sold stocks were ALI (-US\$ 37.4 million), BPI (-US\$20.3 million) and BDO (-US\$14.50 million). Foreign participation recorded at 50%, an even split with locals.

On a per stock basis, the top three index gainers for the month include: NIKL (+17.51%), WLCON (+10.00%) and SCC (+8.72%). Meanwhile, the bottom three performers include: BLOOM (-16.42%), ALI (-8.39%) and MONDE (-7.13%).

## Cumulative Performance (%)

YTD	6 Months	1YR	2YR	Since Inception
4.02	3.11	4.02	6.38	-0.74

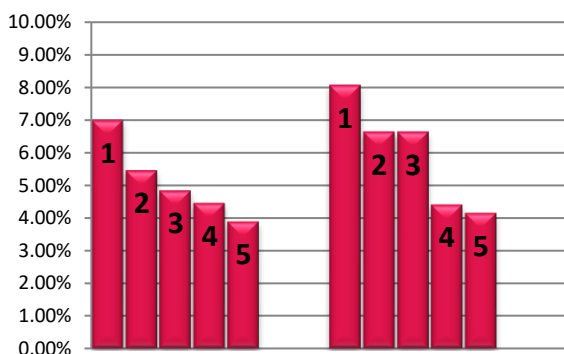
## NAVPU Graph



## PORTFOLIO COMPOSITION

Allocation	% of Fund
Equities	47.56
Cash	2.43
Corporates	4.71
Time Deposits and Money Market	0.00
Government	44.76
Other Receivables - Net of Liabilities	0.54

## TOP HOLDINGS Asset Allocation



**Risk Warning:** Past performance is not indicative of future results. Our investment management services relate to a variety of investments, each of which can fluctuate in value. The value of portfolios we manage may fall as well as rise, and the investor may not get back the full amount originally invested. The investment risks vary between different types of instruments. For example, for investments involving exposure to a currency other than that in which the portfolio is denominated, changes in the rate of exchange may cause the value of investments, and consequently the value of the portfolio, to go up or down. In the case of a higher volatility portfolio the loss on realization or cancellation may be very high (including total loss of investment), as the value of such an investment may fall suddenly and substantially. In making an investment decision, prospective investors must rely on their own examination of the merits and risks involved. **Disclaimer:** Unless otherwise noted, all information contained herein is sourced from BPI AIA\* internal data. The content included herein has been shared with various in-house departments within BPI AIA\*, in the ordinary course of completion. BPI AIA\* complies with the confidentiality requirements of their respective jurisdictions. Parts of this presentation may be based on information received from sources we consider reliable. We do not represent that all of this information is accurate or complete, however, and it may not be relied upon as such.

### Top Equity Holdings

① SM Investments Corporation	7.00%
② Int'l. Container Terminal Services, Inc.	5.46%
③ BDO Unibank, Inc.	4.84%
④ Bank of the Philippine Islands	4.46%
⑤ SM Prime Holdings, Inc.	3.89%

### Top Fixed Income Holdings

① Retail Treasury Bond 3/7/2028	8.08%
② Fixed Rate Treasury Note 01/25/2034	6.64%
③ Retail Treasury Bond 2/28/2029	6.64%
④ Fixed Rate Treasury Note 10/13/2029	4.41%
⑤ Retail Treasury Bond 8/22/2028	4.15%